



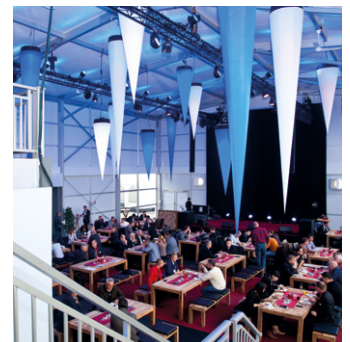
LOSBERGER DE BOER



Palas. Welcome to a new dimension. For exclusive presentations

Linear architecture, cubic forms and generous glazing. When you choose the new high-capacity Palas event and trade fair hall, you opt for elegance and atmosphere in a functional design. Visually appealing and spacious, Palas provides incredible design freedom. Both inside and out. The various facade structuring options make for uniquely contemporary architectural features. Depending on need, wall elements made of hard-PVC or insulating glass can be selected. Thermo roof covers and thermo wall cassettes improve energy efficiency. And the Palas Emporium two-storey variant creates an optimal spatial experience.

Palas - experience events from a completely new perspective. Worldwide.



Emporium

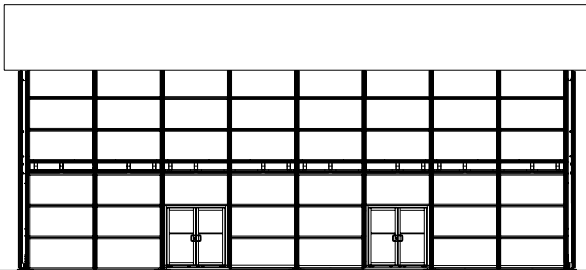
Palas

Technical Information

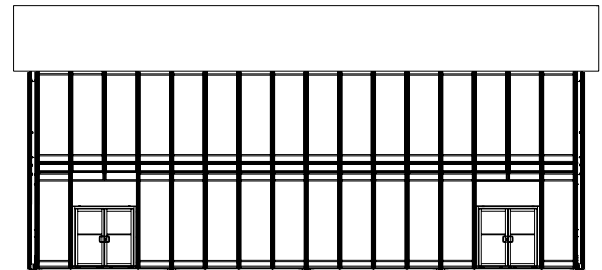
Type/Dimension	Palas 10.5/800	Palas 15.5/800	Palas 20.5/800	Palas 25.5/800	Palas 30.5/800
Width A/clear width (m)	10.18/9.88	15.18/14.88	20.18/19.88	25.18/24.88	30.18/29.88
Eave height C (m)	7.80	7.80	7.80	7.80	7.80
Ridge height D (m)	8.56	8.86	9.17	9.48	9.79
Clear eave height E1/E1* (m)	7.46/6.39*	7.46/6.39*	7.46/6.38*	7.46/5.39*	7.46/5.40*
Clear ridge height E2 (m)	8.07	8.37	8.67	8.97	9.27
Clear height under mezzanine	3.48/2.53*	3.48/2.53*	3.48/2.53*	3.48/2.53*	3.48/2.53*
Clear height above mezzanine	3.53	3.53	3.53/2.46*	3.53/2.46*	3.53/2.46*
Height roof parapet (m)	2.45	2.45	2.45	2.45	2.45
Total height (m)	9.85	9.85	9.85	9.85	9.85
Roof slope	7°	7°	7°	7°	7°
Gable truss B1 (m)	5.09	5.09	5.09	5.09	5.09
Gable truss B2 (m)	5.00	5.00	5.00	5.00	5.00
Truss-distance B3 (m)	5.00	5.00	5.00	5.00	5.00
Longest component (m)	7.67	7.67	10.72	10.72	10.72
Truss profile (mm)	300 x 120	300 x 120	300 x 120	300 x 120	300 x 120
Min. assembly length (m)	10.00	15.00	20.00	25.00	30.00
Suspended load per truss (kg)	1.000	1.000	1.000	1.000	1.000

Ground anchoring: Steel anchor; max. assembly length: optional in longitudinal direction; snow load: none (available upon request); wind load per EN 13782; clear height from upper edge of ground floor to mezzanine floor, * to the corner strut

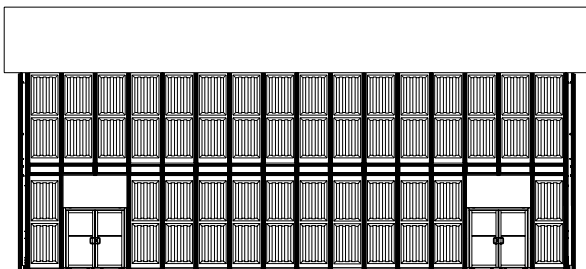
Wall system elements, variants



Palas gable end with horizontal glass elements or thermo wall cassettes



Palas gable end with vertical glass elements



Palas gable end with vertical hard-PVC elements

Losberger De Boer
 285 Bucheimer Rd Suite A
 Frederick, MD 21701
 Phone: 1-301-682-8000
 Fax: 1-301-682-8005
 E-Mail: LosbergerUS@losbergerdeboer.com
 www.losbergerus.com