



LOSBERGER DE BOER



## multiflex profile tube flooring

### For high demands

**The multiflex flooring system – well conceived down to the last detail, the ideal, economic solution for maximum accuracy and simple handling.**

For a tent floor that has to fulfil the tough demands of today's rental market, or when it is not possible to secure the tent by means of ground anchors, our profile tube floor offers the best solution. The excellent fit of the individual flooring elements means that it is easy to install and visually pleasing even without floor coverings.

When weight anchoring is required, our flooring system with integrated steel weight plates provides the perfect solution: After the installation of all floor cassettes you simply hand-position the practical metal rods in the required bays to create the necessary weight. With this technology the use of ground anchors is no longer required.





Technology

The well conceived system technique for particularly simple handling.

- Trouble-free transport, storage and maintenance
- Can be extended within the system for all multiflex extensions and multiple-corner structures without costly special solutions
- Can be installed quickly and easily. Only a few shapes and dimensions of floor frames and panels are necessary for all multiflex tents

The floor covering qualities

Floor covering 1 (Premium)

Three-ply floor covering, Var. 1 WBP 100 glued crosswise to DIN 68705 T3+4, thickness 21 mm, polished on both sides, hot pressed synthetic resin coating. Colour: natural brown. Covering slats of spruce/fir, jointed from equally wide slats, cut edges sealed. Head ends of unprotected edges fitted with galvanized U-profile edge protection.

Floor covering 2 (Standard)

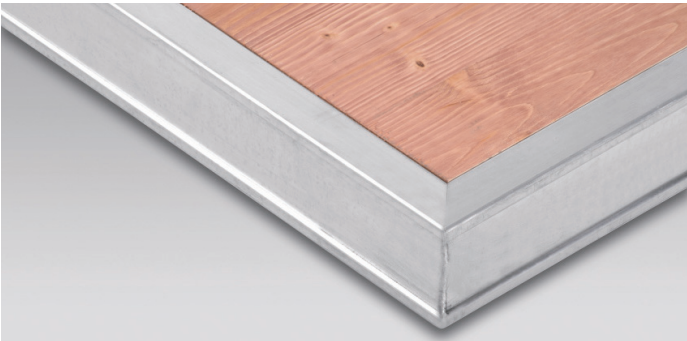
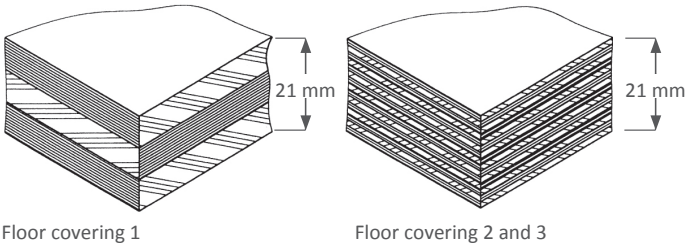
Three-ply floor covering, Var. 16 WBP 100 glued crosswise to DIN 68705 T3+4, thickness 21 mm, polished on both sides, hot pressed melamine resin film. Colour: light brown. Covering slats of spruce/fir, jointed from equally wide slats, cut edges sealed. Head ends of unprotected edges fitted with galvanized U-profile edge protection.

Floor covering 3

Birch multiply wooden board, Var. 08 approx. 15-ply WBP 100 glued to DIN 68705 T3, thickness 21 mm. Surface coating with approx. 550 g/m² melamine resin film. Colour: dark-grey with non-slip top surface. Open edges coated and sealed with epoxy resin or acrylic resin varnish. Head ends of unprotected edges can be fitted with galvanized U-profile edge protection at a surcharge on request.

Floor covering 4

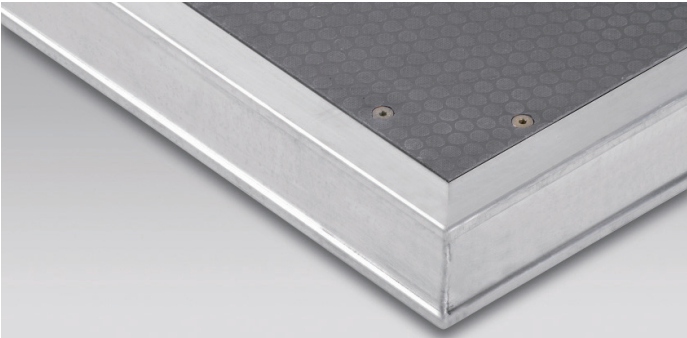
Birch multiply wooden board, Var. 02 approx. 15-ply WBP 100 glued to DIN 68705 T3, thickness 21 mm. Symmetrical veneer structure with equally thick veneers. Birch all through. Coatingon both sides with 220 g/m² phenol resin film. Screen-print non-slip top surface with smooth underside. Colour: standard brown. Open edges coated and sealed with epoxy resin or acrylic resin varnish. Head ends of unprotected edges can be fitted with galvanized U-profile edge protection at a surcharge on request.



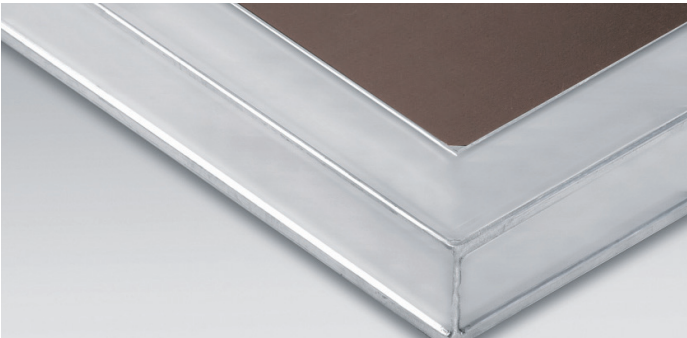
Floor covering 1



Floor covering 2



Floor covering 3



Floor covering 4

Flooring versions

Type A (standard for multiflex Basic units)

Allround frame of profile tube on the longitudinal sides and square tube welded into place at the head ends. Stacking height for 2 pallets: 140 mm.

Type B

Allround frame of profile tube with additionally welded in square tubes. Stacking height for 2 pallets: 140 mm. Complete surround border for the floor covering. Particularly robust design for extreme use.

Type C

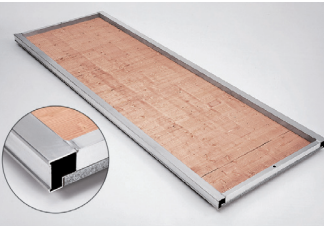
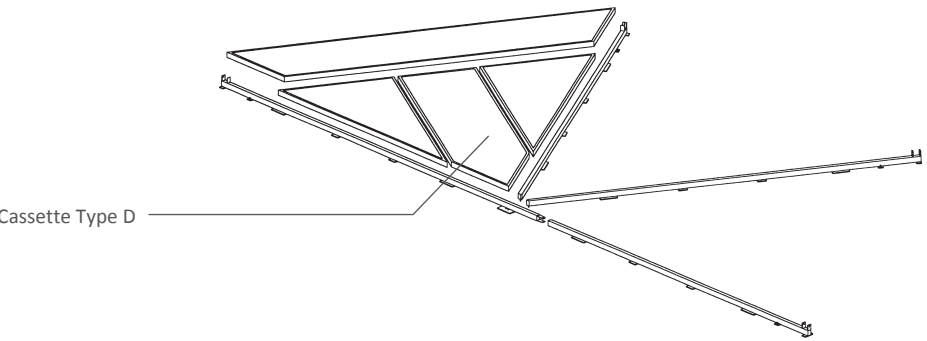
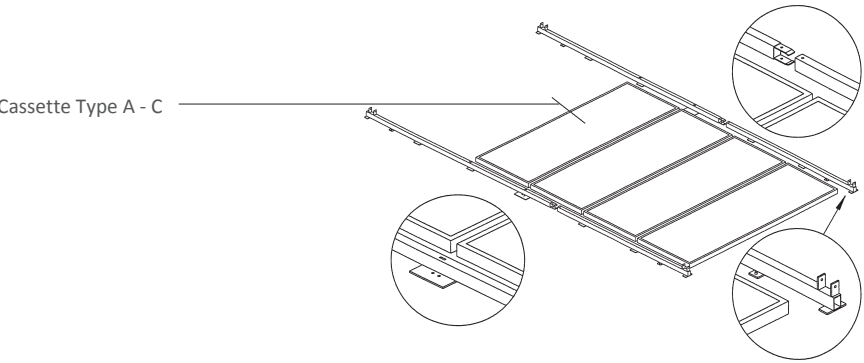
Longitudinal frame of longitudinal profile tube screwed to the flooring panels. Stacking height for 2 pallets: 90 mm with interlocking stacking. Saves 35 % space compared to Types A and B.

Type D (standard for multiflex multiple-corner units)

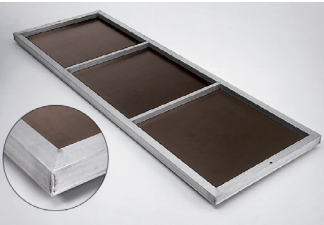
Allround frame of profile tube with square tube welded in, depending on size. Stacking height for 2 pallets: 140 mm. Used for Apse, Pavilion, Domicile and Tridome.

Anchor-free installation

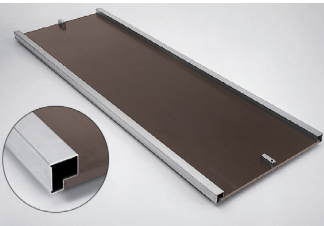
Additionally welded angles for the integration of metal rod weights are available upon request for Type B. With the weight plates you can weigh down your tent easily, simply and invisibly which is a great solution if standard tent anchoring techniques are impractical. Unsightly concrete blocks which only get in the way are unnecessary. The practical metal rods are easily positioned in the required bays and create the necessary weight.



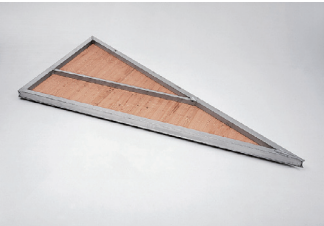
Type A



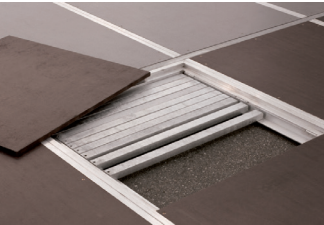
Type B



Type C



Type D



Anchor-free installation

# Dimensions

Tent type multiflex		Floor element			Substructure	
		L x W (m)	Frame type	Covering	Design	Longest component (m)
Basic units P9	4/230	2.948 x 1.009	A/B/C	1/2/3	galvanized steel sills	4.070
	6/230					3.649
	8/230					4.560
	9/230					4.894
	10/230					5.669
	12/230					6.278
Basic units P7	6/250	2.948 x 1.009	A/B/C			4.283
	9/250					5.121
	12/250					6.100
	15/250					6.100
Apse, Pavillon, Domicille P9	4/230	1.711 x 0.987	D			4.070
	6/230	2.581 x 1.495				3.649
	8/230	3.457 x 1.006				4.560
	10/230	5.008 x 0.874				5.669
Apse, Pavillon, Domicille P7	6/250	2.581 x 1.495	D			3.649
	9/250	4.560 x 1.310				4.894
	12/250	4.600 x 1.310				6.278
Arcum P9	3/230	2.948 x 1.009	A/B/C			3.060
	6/230					3.649
	8/230					4.560
Arcum P7	6/250	2.948 x 1.009	A/B/C			4.283
	9/250					5.121
	12/250					6.100
Arcum Triangular field	3/230	1.750 x 0.976	D			3.060
	6/230	3.315 x 0.975				3.649
	8/230	4.361 x 0.975				4.560
Pagode	3/230 - 250	2.604 x 0.999	A			2.700
	3.3/230 - 250	2.948 x 1.009				3.104
	4/230 - 250	3.604 x 0.999				3.700
	4.3/230 - 250	2.948 x 1.009 1.086 x 1.009				4.115
	5/230 - 250	2.276 x 0.999				4.700
	6/230 - 250	2.276 x 0.999				5.700



covering 1 - Losberger De Boer multiflex with profile tube flooring



covering 2 - Losberger De Boer multiflex with profile tube flooring



covering 3 - Losberger De Boer multiflex with profile tube flooring

NOTE: Subject to alterations in the interest of product improvement in line with state-of-the-art technology progress.

Losberger GmbH  
Fürfeld · Gottlieb-Daimler-Ring 14  
74906 Bad Rappenau · Germany  
Phone: +49 7066 980-0  
Fax: +49 7066 980-232  
E-Mail: [info@losbergerdeboer.com](mailto:info@losbergerdeboer.com)  
[www.losbergerdeboer.com](http://www.losbergerdeboer.com)  
Losberger De Boer Group