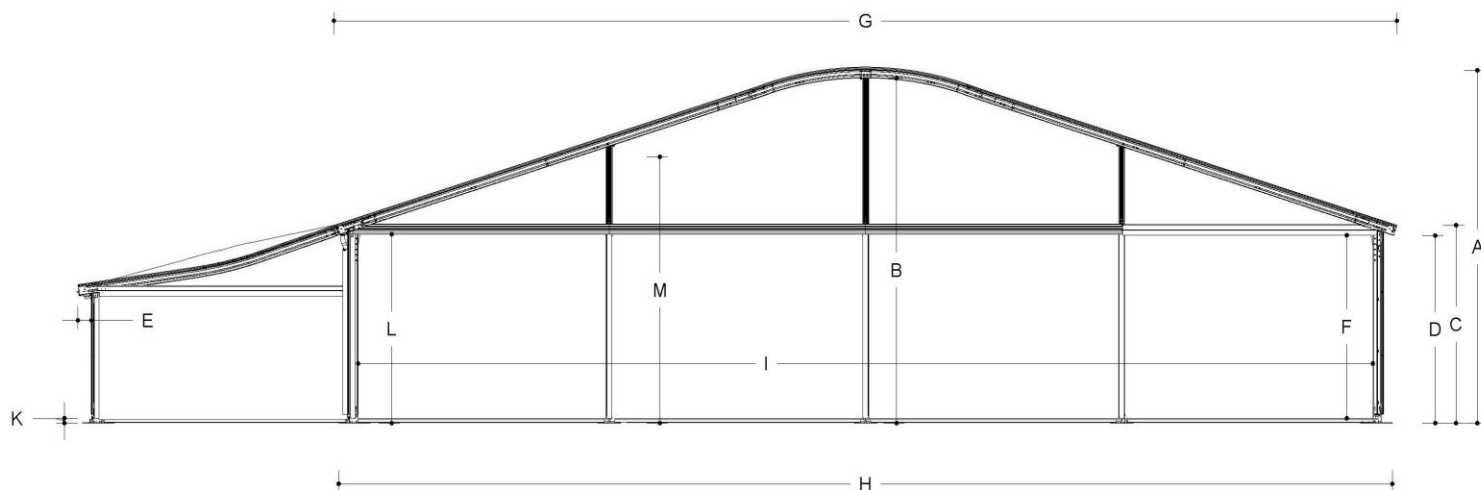




# Anova Vista

# AN10/350/5



## Technical data

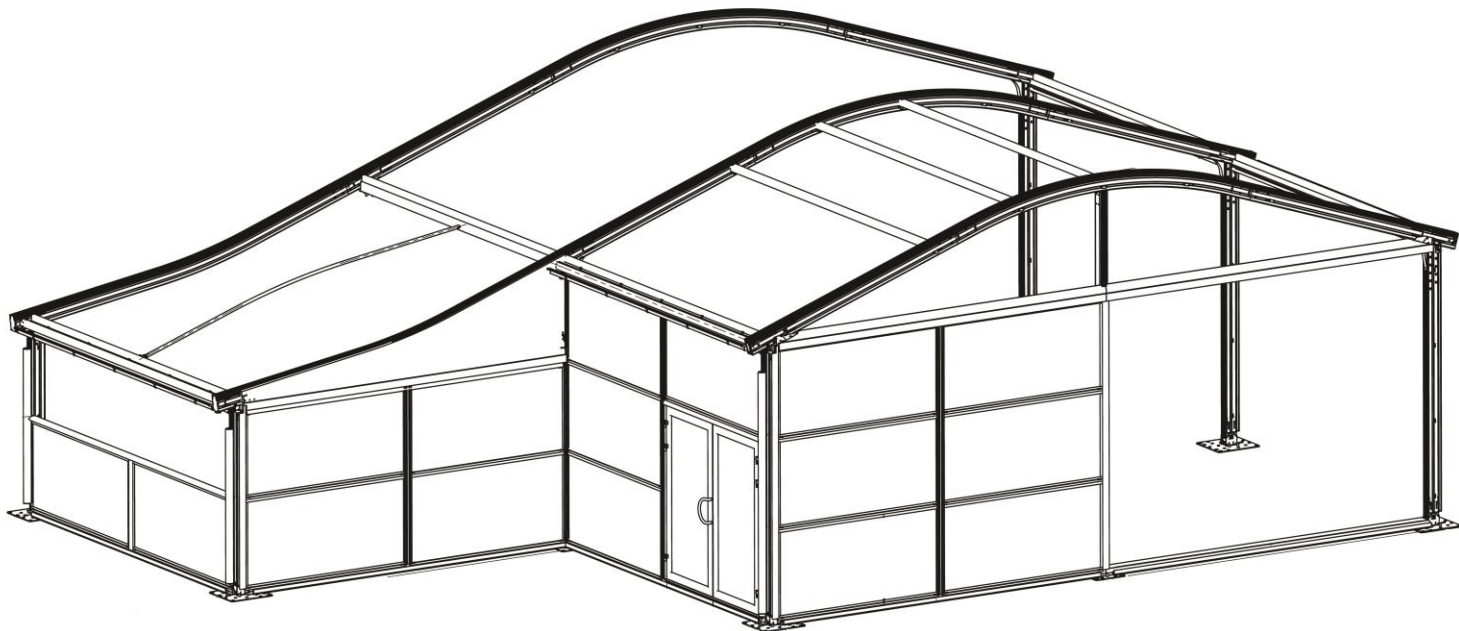
	(mm)			
<b>A</b>	External ridge height	5054	Wind load	0,50 kN/m <sup>2</sup>
<b>B</b>	Internal free ridge height	4766	Snow load	0 KN/m <sup>2</sup>
<b>C</b>	External side height	3644		
<b>D</b>	External free height	3455	Bearing capacity standard floor	500kg/m <sup>2</sup>
<b>E</b>	Roof overhang	190		
<b>F</b>	Internal free side height	3371	Column profile	120x200
<b>G</b>	External width of the roof	10772	Maximum roof load	400kg per rafterset
<b>H</b>	Maximum width ground level	10487		
<b>I</b>	Internal width between columns	9800	Mounting points in structure	Columns and rafters
<b>J</b>	Bay distance	5000		
<b>K</b>	Floorheight	183		
<b>L</b>	Maximum headway ground to underside gable purlin	3480	Standard fire resistance standard roof covers	DIN 4102/B1 M2
<b>M</b>	Maximum headway with internal gable	5000		B-s2,d0



LOSBERGER DE BOER

# Anova Vista

# AN10/350/5



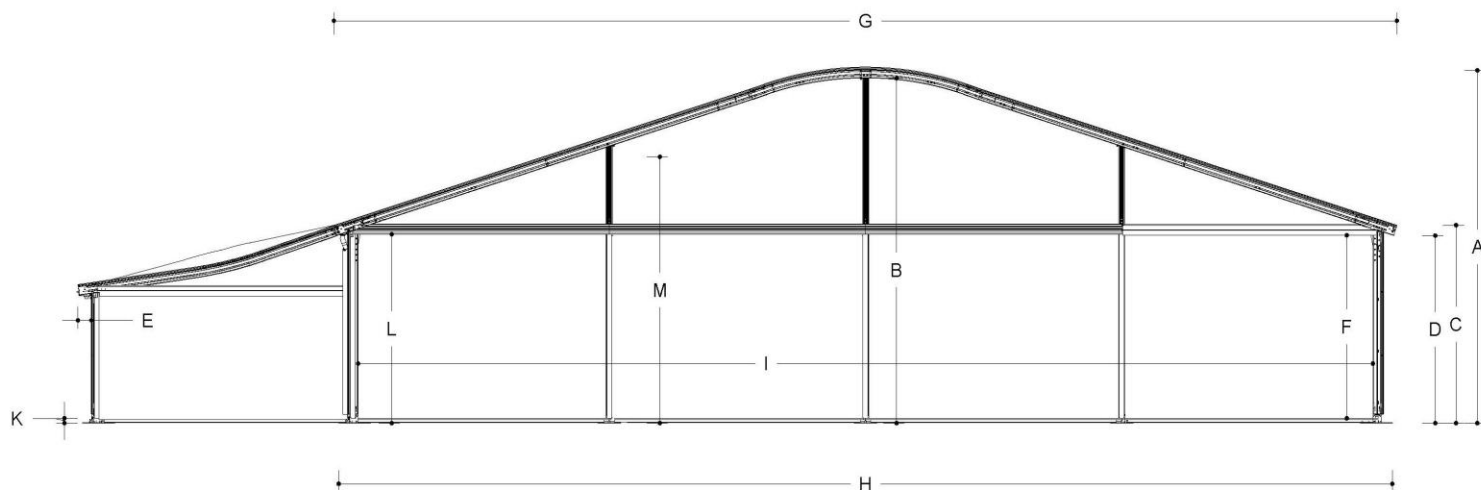
## Options

Available roof covers	White opaque roof cover Transparent roof cover Silver/grey roof cover Pneumatic tensioning system	Available side curtains and side panels	Horizontal PVC side panels Horizontal glass side panels
Available floors	Cassette floor Plate floor Antiskid cassette floor	Roof insulation	Yes
Available doors	Aluminium pushbar deur 2,5m (glas) Emergency door	Insulation side panels	Yes
		Connection to permanent buildings	Yes
		Connection to other Losberger De Boer structures	Yes
		Extra options/possibilities	Extra 'wing' (5m)



# Anova Vista

# AN15/350/5



## Technical data

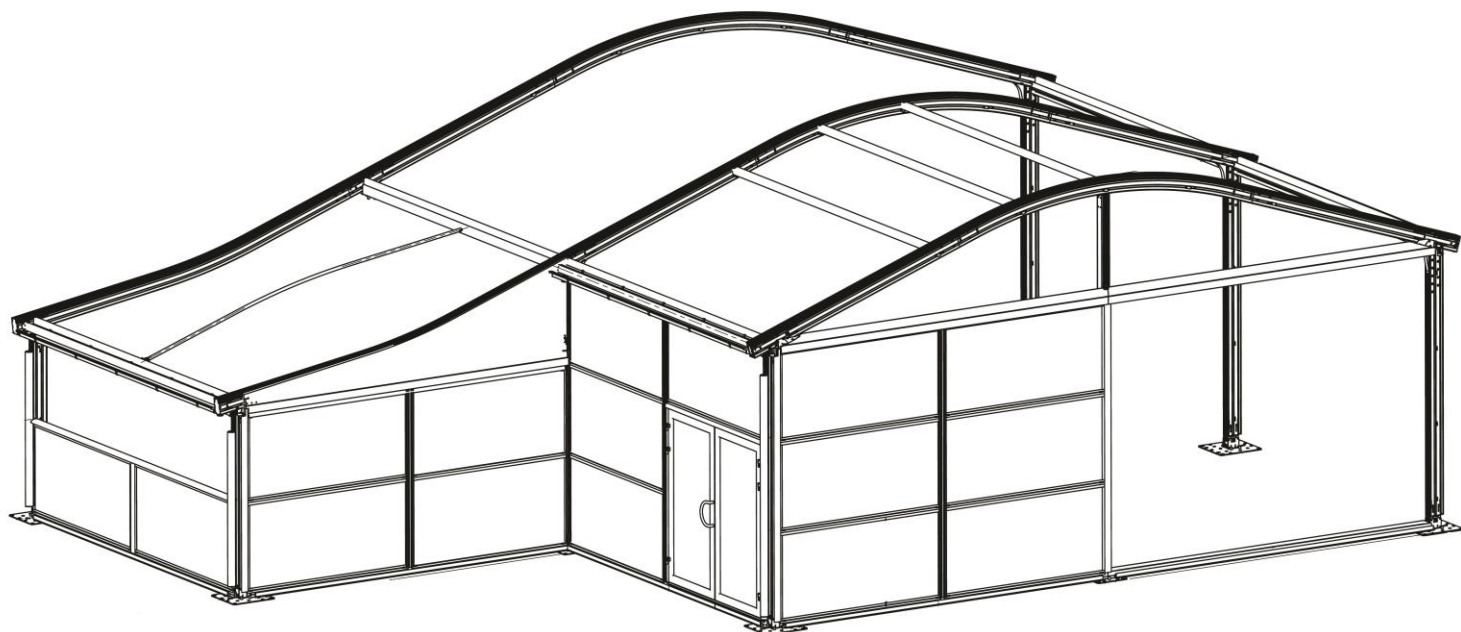
	(mm)			
<b>A</b>	External ridge height	5800	Wind load	0,50 kN/m <sup>2</sup>
<b>B</b>	Internal free ridge height	5512	Snow load	0 KN/m <sup>2</sup>
<b>C</b>	External side height	3644		
<b>D</b>	External free height	3455	Bearing capacity standard floor	500kg/m <sup>2</sup>
<b>E</b>	Roof overhang	190		
<b>F</b>	Internal free side height	3371	Column profile	120x200
<b>G</b>	External width of the roof	15772	Maximum roof load	400kg per rafterset
<b>H</b>	Maximum width ground level	15484		
<b>I</b>	Internal width between columns	14800	Mounting points in structure	Columns and rafters
<b>J</b>	Bay distance	5000		
<b>K</b>	Floorheight	183		
<b>L</b>	Maximum headway ground to underside gable purlin	3480	Standard fire resistance standard roof covers	DIN 4102/B1 M2
<b>M</b>	Maximum headway with internal gable	5000		B-s2,d0



LOSBERGER DE BOER

# Anova Vista

# AN15/350/5



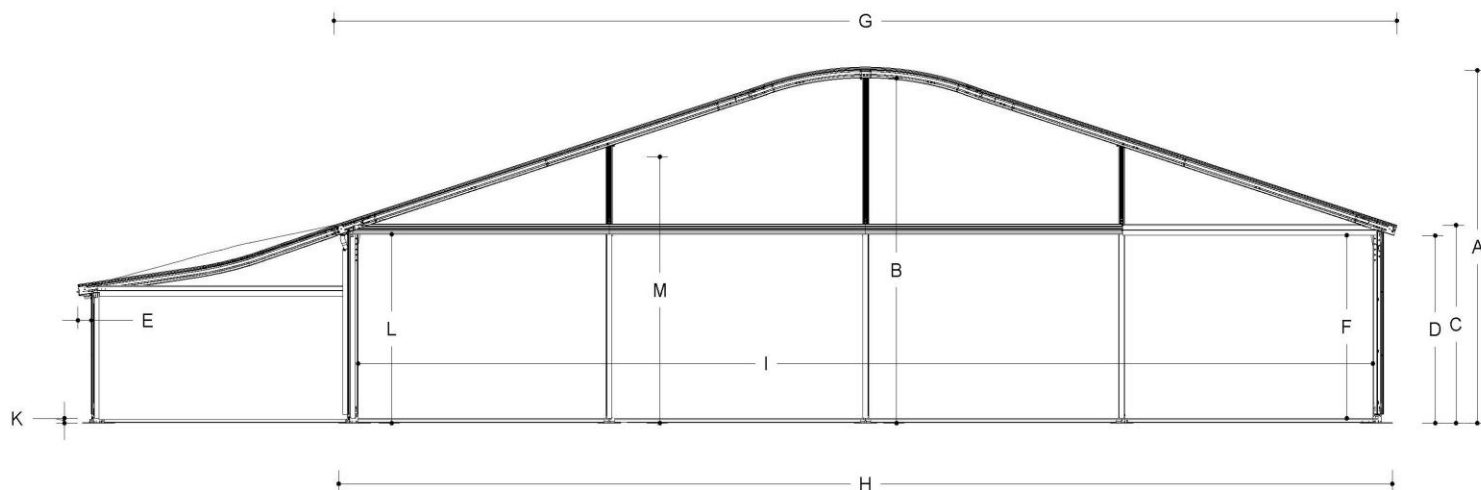
## Options

Available roof covers	White opaque roof cover Transparent roof cover Silver/grey roof cover Pneumatic tensioning system	Available side curtains and side panels	Horizontal PVC side panels Horizontal glass side panels
Available floors	Cassette floor Plate floor Antiskid cassette floor	Roof insulation	Yes
Available doors	Aluminium pushbar deur 2,5m (glas) Emergency door	Insulation side panels	Yes
		Connection to permanent buildings	Yes
		Connection to other Losberger De Boer structures	Yes
		Extra options/possibilities	Extra 'wing' (5m)



# Anova Vista

# AN20/350/5



## Technical data

	(mm)			
<b>A</b>	External ridge height	6557	Wind load	0,50 kN/m <sup>2</sup>
<b>B</b>	Internal free ridge height	6269	Snow load	0 KN/m <sup>2</sup>
<b>C</b>	External side height	3644		
<b>D</b>	External free height	3455	Bearing capacity standard floor	500kg/m <sup>2</sup>
<b>E</b>	Roof overhang	190		
<b>F</b>	Internal free side height	3371	Column profile	120x200
<b>G</b>	External width of the roof	20772	Maximum roof load	400kg per rafterset
<b>H</b>	Maximum width ground level	20487		
<b>I</b>	Internal width between columns	19800	Mounting points in structure	Columns and rafters
<b>J</b>	Bay distance	5000		
<b>K</b>	Floorheight	183		
<b>L</b>	Maximum headway ground to underside gable purlin	3480	Standard fire resistance standard roof covers	DIN 4102/B1
<b>M</b>	Maximum headway with internal gable	5000		M2
				B-s2,d0

